

KOMFORTKOOOLER™

EVAPORATIVE COOLING

SAVINGS STACKED IN YOUR FAVOR.

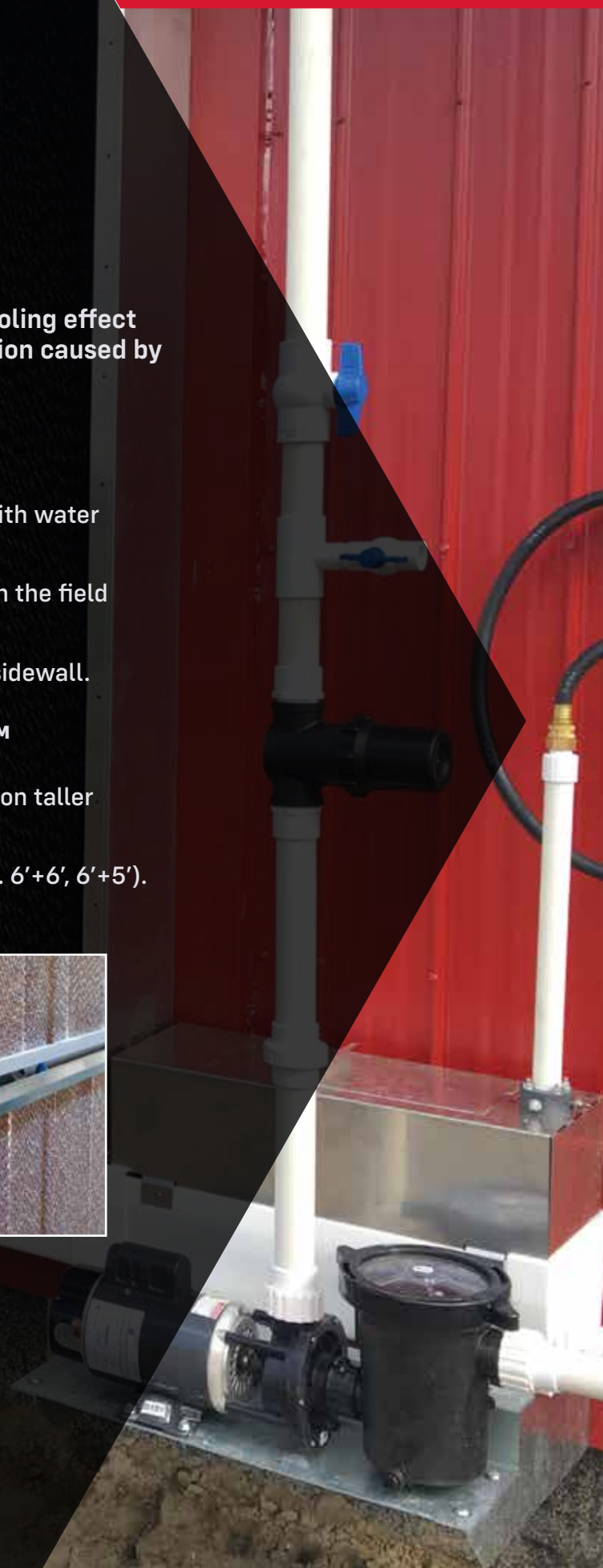
Evaporative cooling systems utilize the natural cooling effect of evaporation to combat seasonal dips in production caused by heat stress.

KOMFORT KOOLER™

- Automatic float valve for matching water supply with water demand.
- Preformed square trough requires no tube cutting in the field reducing installation time.
- Trough support brackets suspend the system on a sidewall.

DOUBLE STACK KOMFORT KOOLER™

- Offers the most efficient use of vertical wall space on taller buildings.
- Mix and match any combination of pad heights (e.g. 6'+6', 6'+5').

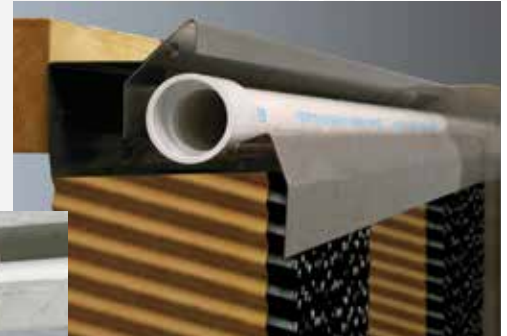


MAXIMUM COOLING **PERFORMANCE**

OPEN TOP DESIGN

The open top design offers the grower easy access to manage and maintain the system. It utilizes a combination of PVC and high quality stainless steel or aluminum for years of dependable operation under the harshest conditions.

- Allows for easy access to water jets and pressure checking.
- No hassle access to the spray bar for cleaning.
- Pre-punched components simplify installation.
- Water deflectors insure pad wetting is uniform.
- Cam-Lock system allows toolless pad installation and replacement.



CLOSED TOP DESIGN

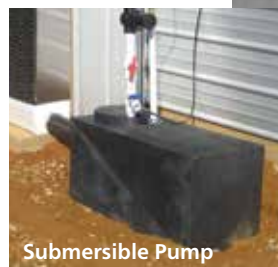
The Komfort Kooler closed top system has been an industry favorite for many years. This system offers great durability and longevity.

- Designed with durability and ease of installation in mind.
- Hinge cover and thumb screws firmly hold the cooling pads in place and allow accessibility to the spray bar.
- The spray bar bracket and water deflectors insure pads are uniformly wet.



CENTRIFUGAL (JET) PUMP

Cumberland's centrifugal jet pump and automatic float valve match the water supply with system demand. The pump can be end mounted, center mounted, or used as a dual pump system. The center mount design allows for long runs to continue seamlessly (no breaking pads or additional components).



Submersible Pump

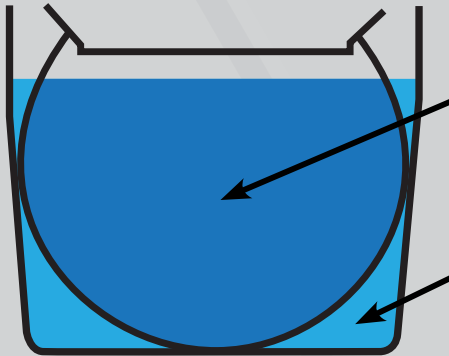


Centrifugal Jet Pump

SUBMERSIBLE PUMP SYSTEM

A one-piece roto-molded holding tank offers increased water storage capacity. The submersible pump keeps water levels consistent for efficient water delivery.

BIG SAVINGS ON **TIME & MONEY**

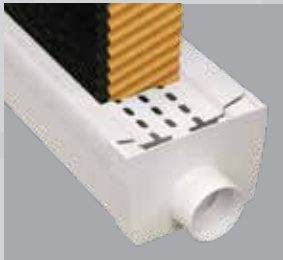


Round Tube
1.6 Gallons/Ft.

Komfort Kooler
2.1 Gallons/Ft.

MORE WATER CAPACITY

Cumberland Closed-Top and Open-Top Komfort Kooler designs utilize a pre-formed square trough serving as a 2.1 gallons per foot (26 liters per meter) water reservoir. The Komfort Kooler trough reservoir holds 24% more water compared to round tube systems.



PRE-FORMED TROUGH

The Komfort Kooler system trough allows unevaporated water to be recirculated back through the system. The trough requires no tube cutting in the field. A rigid molded plastic tray with "Snap Lock" feature holds pads firmly in place.



COOLING PADS

- Feature high-quality, heavyweight paper for maximum water absorption.
- Resin coating adds durability to increase pad longevity and prevent fungi growth.
- Available Edge Guard coating provides additional layer of strength and longevity to the pad, as well as makes it easier to clean.



**CONTACT YOUR CUMBERLAND REPRESENTATIVE
OR SCAN THE QR CODE FOR MORE INFORMATION.**

